



Closet Catalog

APRIL 2026

NOTES

This image shows a blank sheet of white paper with horizontal ruling lines. The lines are evenly spaced and run across the width of the page. There are no margins, text, or other markings on the paper.

PRODUCT WARRANTY

Fusion Cabinet Company hereby warrants to the original purchaser, for residential applications only, that all cabinets and accessories, hinges and all drawers, including system hardware, are free from defects in materials and workmanship. This warranty runs for as long as you own your home and begins upon the date of delivery to you. This warranty is expressly limited to repair or replacement of the defective part at the discretion of Fusion Cabinet Company, and does not include labor for removal or replacement. This warranty does not extend to defects caused by improper handling, storage, installation, assembly or disassembly, intentional damage, product modifications, exposure to the elements including humidity which may result in warping or splitting, accidental misuse, abuse or negligence. Natural woods may vary in texture, color and wood grain, and exhibit subtle changes as they age. For example, wood joints may eventually have visible cracking around the joint area and cabinet colors may darken or lighten over time. Sunlight, smoke, moisture, household cleaners and other environmental conditions may cause materials to vary from their original color and/or to warp, split or crack. These variations are considered to be the nature of the material in relation to their environmental exposure and are not covered under this warranty.

Additional Limitations and Disclaimers

Fusion Cabinet Company makes no other warranties other than those set forth herein and all other warranties are hereby disclaimed. The implied warranties of merchantability and fitness for a particular purpose are limited in duration to the length of the limited warranty period while on the market. The limited warranties set forth herein are limited to the first and original buyer and are not transferable thereafter. In no event shall Fusion Cabinet Company be liable for incidental or consequential damages to the purchaser or to any third party, including, without limitation, damages arising from personal injury, lost profits, loss of business opportunity, loss of property, economic losses, or statutory or exemplary damages, whether from negligence, warranty, strict liability or otherwise. Some states do not allow the exclusion or limitation of incidental or consequential damages, or limitations on how long an implied warranty lasts, so the above limitations and exclusions may not apply to you. This warranty gives you specific legal rights, and you may also have other rights which vary from state to state.

Claims

All claims for defective cabinets and accessories must be submitted to Fusion Cabinet Company in writing and must specify the defects present in the cabinets and accessories. After Fusion Cabinet Company has had an opportunity to inspect the cabinets and accessories, they will, at their discretion, either replace defective cabinets and accessories or repair any defects in the cabinets and accessories.

Fusion Cabinet Company
6800 W Van Buren St.
Phoenix, AZ 85043
Tel 602-730-9225
sales@fusioncabinetcompany.com



CLOSETS

CLOSET 84" HIGH WITH SHELVES



DIMENSIONS

SKU	WIDTH	HEIGHT	DEPTH	BACK PANEL
CL-SH19.58415O	19.5	84	15	No
CL-SH25.58415O	25.5	84	15	No
CL-SH31.58415O	31.5	84	15	No
CL-SH37.58415O	37.5	84	15	No
CL-SH19.58415C	19.5	84	15	Yes
CL-SH25.58415C	25.5	84	15	Yes
CL-SH31.58415C	31.5	84	15	Yes
CL-SH37.58415C	37.5	84	15	Yes
CL-SH19.58424C	19.5	84	24	Yes
CL-SH25.58424C	25.5	84	24	Yes
CL-SH31.58424C	31.5	84	24	Yes
CL-SH37.58424C	37.5	84	24	Yes

Notes: Shelves are adjustable.
Reduced width modification is free of charge.



19.5, 25.5, 31.5, 37.5

MODIFICATIONS

D&F	FE	RD	ID	RH	RW	MI1	MI2	MI3	RDTK	RCTK	PFG
					X						

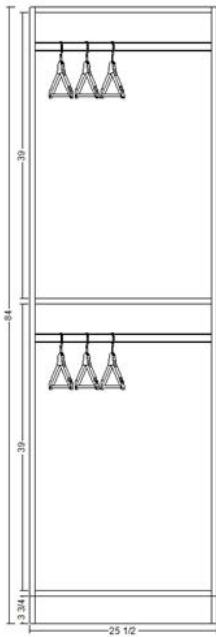
CLOSET 84" HIGH - DOUBLE HANGING



DIMENSIONS

SKU	WIDTH	HEIGHT	DEPTH	BACK PANEL
CL-DH19.58415O	19.5	84	15	No
CL-DH25.58415O	25.5	84	15	No
CL-DH31.58415O	31.5	84	15	No
CL-DH37.58415O	37.5	84	15	No
CL-DH19.58415C	19.5	84	15	Yes
CL-DH25.58415C	25.5	84	15	Yes
CL-DH31.58415C	31.5	84	15	Yes
CL-DH37.58415C	37.5	84	15	Yes
CL-DH19.58424C	19.5	84	24	Yes
CL-DH25.58424C	25.5	84	24	Yes
CL-DH31.58424C	31.5	84	24	Yes
CL-DH37.58424C	37.5	84	24	Yes

Notes: Shelf is adjustable.
Reduced width modification is free of charge.



19.5, 25.5, 31.5, 37.5

MODIFICATIONS

D&F	FE	RD	ID	RH	RW	MI1	MI2	MI3	RDTK	RCTK	PFG
					X						

CLOSET 84" HIGH - HIGH & DRAWER



DIMENSIONS

SKU	WIDTH	HEIGHT	DEPTH	BACK PANEL
CL-HD19.58415O	19.5	84	15	No
CL-HD25.58415O	25.5	84	15	No
CL-HD31.58415O	31.5	84	15	No
CL-HD37.58415O	37.5	84	15	No
CL-HD19.58415C	19.5	84	15	Yes
CL-HD25.58415C	25.5	84	15	Yes
CL-HD31.58415C	31.5	84	15	Yes
CL-HD37.58415C	37.5	84	15	Yes
CL-HD19.58424C	19.5	84	24	Yes
CL-HD25.58424C	25.5	84	24	Yes
CL-HD31.58424C	31.5	84	24	Yes
CL-HD37.58424C	37.5	84	24	Yes

Notes: The shelf is fixed.
Reduced width modification is free of charge.



19.5, 25.5, 31.5, 37.5

MODIFICATIONS

D&F	FE	RD	ID	RH	RW	MI1	MI2	MI3	RDTK	RCTK	PFG
					X						

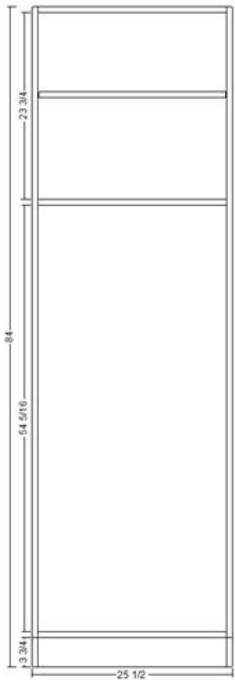
CLOSET 84" HIGH - FULL HANGING

DIMENSIONS



SKU	WIDTH	HEIGHT	DEPTH	BACK PANEL
CL-FH19.58415O	19.5	84	15	No
CL-FH25.58415O	25.5	84	15	No
CL-FH31.58415O	31.5	84	15	No
CL-FH37.58415O	37.5	84	15	No
CL-FH19.58415C	19.5	84	15	Yes
CL-FH25.58415C	25.5	84	15	Yes
CL-FH31.58415C	31.5	84	15	Yes
CL-FH37.58415C	37.5	84	15	Yes
CL-FH19.58424C	19.5	84	24	Yes
CL-FH25.58424C	25.5	84	24	Yes
CL-FH31.58424C	31.5	84	24	Yes
CL-FH37.58424C	37.5	84	24	Yes

Notes: Shelves are adjustable.
Reduced width modification is free of charge.



MODIFICATIONS

D&F	FE	RD	ID	RH	RW	MI1	MI2	MI3	RDTK	RCTK	PFG
					X						

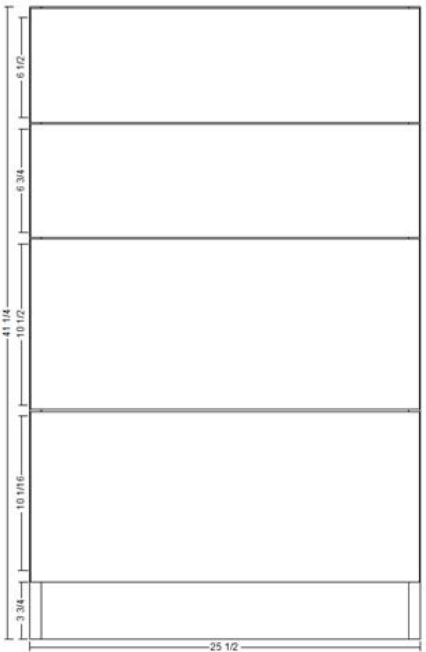
CLOSET 41" HIGH - DRAWERS

DIMENSIONS



SKU	WIDTH	HEIGHT	DEPTH	BACK PANEL
CL-DW19.54115C	19.5	41	15	Yes
CL-DW25.54115C	25.5	41	15	Yes
CL-DW31.54115C	31.5	41	15	Yes
CL-DW19.54124C	19.5	41	24	Yes
CL-DW25.54124C	25.5	41	24	Yes
CL-DW31.54124C	31.5	41	24	Yes

Notes: Reduced width modification is free of charge.



19.5, 25.5, 31.5

MODIFICATIONS

D&F	FE	RD	ID	RH	RW	MI1	MI2	MI3	RDTK	RCTK	PFG
					X						

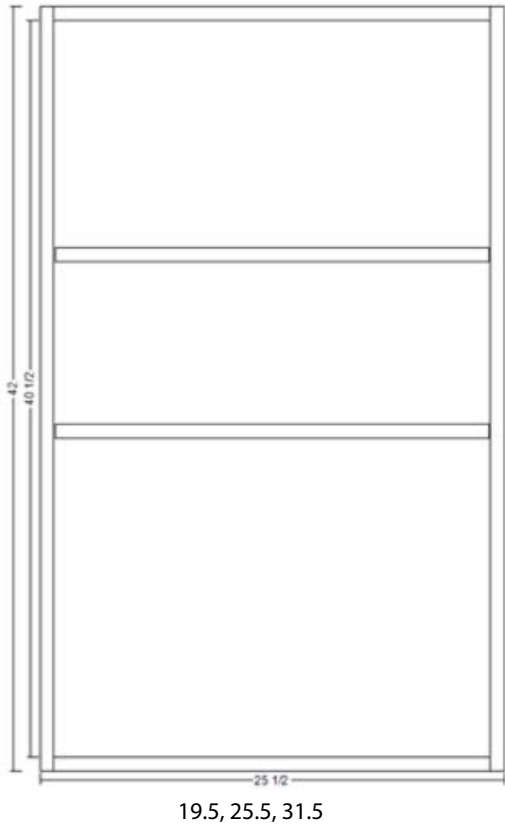
CLOSET 42" HIGH - TALL WALL



DIMENSIONS

SKU	WIDTH	HEIGHT	DEPTH	BACK PANEL
CL-TW19.54215O	19.5	42	15	No
CL-TW25.54215O	25.5	42	15	No
CL-TW31.54215O	31.5	42	15	No
CL-TW19.54215C	19.5	42	15	Yes
CL-TW25.54215C	25.5	42	15	Yes
CL-TW31.54215C	31.5	42	15	Yes
CL-TW19.54224C	19.5	42	24	Yes
CL-TW25.54224C	25.5	42	24	Yes
CL-TW31.54224C	31.5	42	24	Yes

Notes: Shelves are adjustable.
Reduced width modification is free of charge.



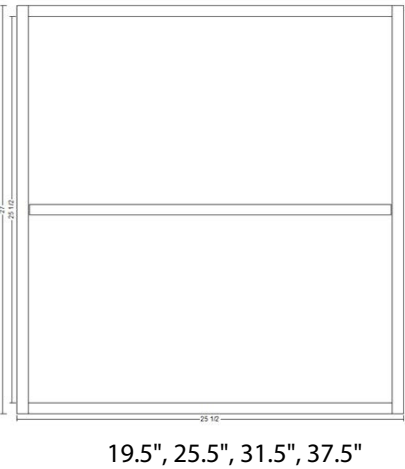
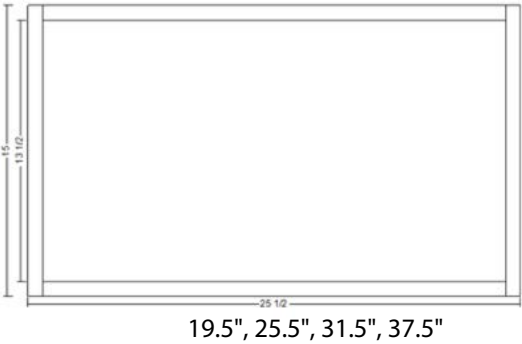
MODIFICATIONS

D&F	FE	RD	ID	RH	RW	MI1	MI2	MI3	RDTK	RCTK	PFG
					X						

CLOSET - WALL

DIMENSIONS

SKU	WIDTH	HEIGHT	DEPTH	BACK PANEL
CL-W19.51515C	19.5	15	15	Yes
CL-W25.51515C	25.5	15	15	Yes
CL-W31.51515C	31.5	15	15	Yes
CL-W37.51515C	37.5	15	15	Yes
CL-W19.52724C	19.5	27	24	Yes
CL-W25.52724C	25.5	27	24	Yes
CL-W31.52724C	31.5	27	24	Yes
CL-W37.52724C	37.5	27	24	Yes



Notes: The shelf is adjustable.
Reduced width modification is free of charge.

MODIFICATIONS

D&F	FE	RD	ID	RH	RW	MI1	MI2	MI3	RDTK	RCTK	PFG
					X						

CLOSET 94" HIGH WITH SHELVES



DIMENSIONS

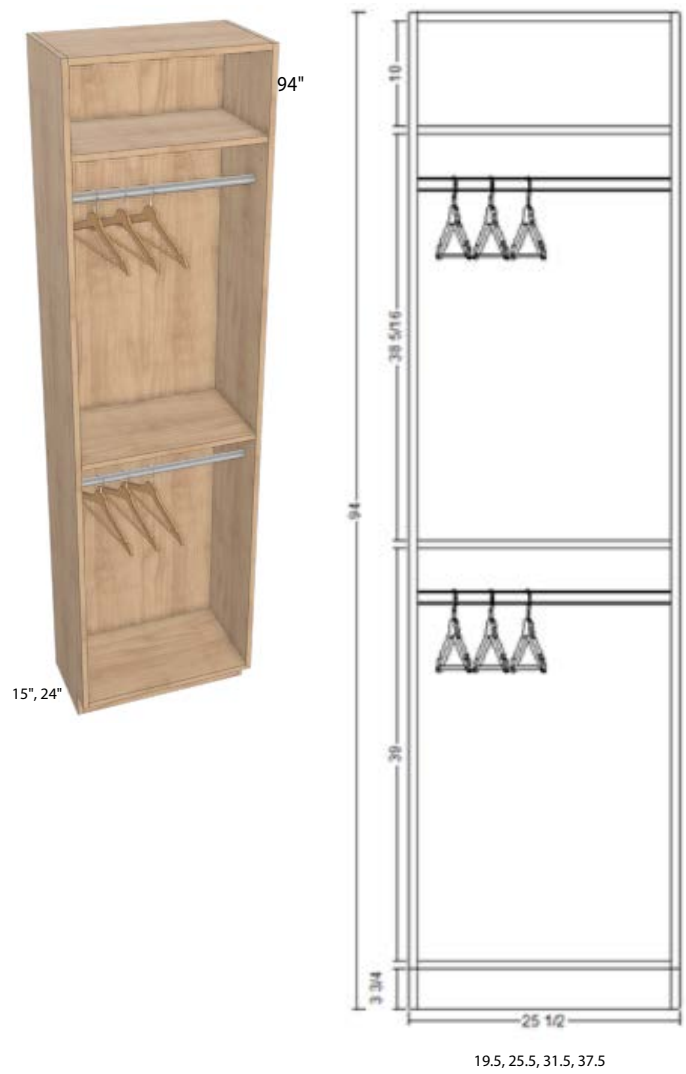
SKU	WIDTH	HEIGHT	DEPTH	BACK PANEL
CL-SH19.59415C	19.5	94	15	Yes
CL-SH25.59415C	25.5	94	15	Yes
CL-SH31.59415C	31.5	94	15	Yes
CL-SH37.59415C	37.5	94	15	Yes
CL-SH19.59424C	19.5	94	24	Yes
CL-SH25.59424C	25.5	94	24	Yes
CL-SH31.59424C	31.5	94	24	Yes
CL-SH37.59424C	37.5	94	24	Yes

Notes: Reduced width modification is free of charge.

MODIFICATIONS

D&F	FE	RD	ID	RH	RW	MI1	MI2	MI3	RDTK	RCTK	PFG
					X						

CLOSET 94" HIGH - DOUBLE HANGING



DIMENSIONS

SKU	WIDTH	HEIGHT	DEPTH	BACK PANEL
CL-DH19.59415C	19.5	94	15	Yes
CL-DH25.59415C	25.5	94	15	Yes
CL-DH31.59415C	31.5	94	15	Yes
CL-DH37.59415C	37.5	94	15	Yes
CL-DH19.59424C	19.5	94	24	Yes
CL-DH25.59424C	25.5	94	24	Yes
CL-DH31.59424C	31.5	94	24	Yes
CL-DH37.59424C	37.5	94	24	Yes

Notes: Reduced width modification is free of charge.

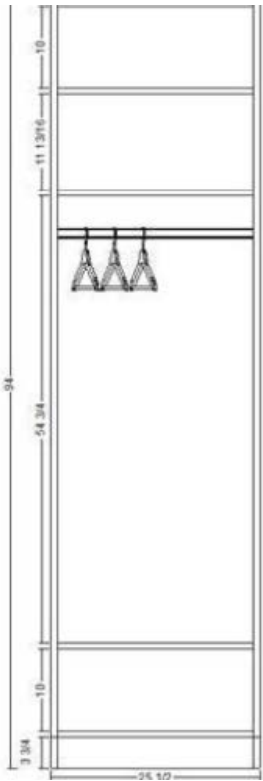
MODIFICATIONS

D&F	FE	RD	ID	RH	RW	MI1	MI2	MI3	RDTK	RCTK	PFG
					X						

DIMENSIONS



SKU	WIDTH	HEIGHT	DEPTH	BACK PANEL
CL-HD19.59415C	19.5	94	15	Yes
CL-HD25.59415C	25.5	94	15	Yes
CL-HD31.59415C	31.5	94	15	Yes
CL-HD37.59415C	37.5	94	15	Yes
CL-HD19.59424C	19.5	94	24	Yes
CL-HD25.59424C	25.5	94	24	Yes
CL-HD31.59424C	31.5	94	24	Yes
CL-HD37.59424C	37.5	94	24	Yes



Notes: The top shelf is adjustable.
Reduced width modification is free of charge.

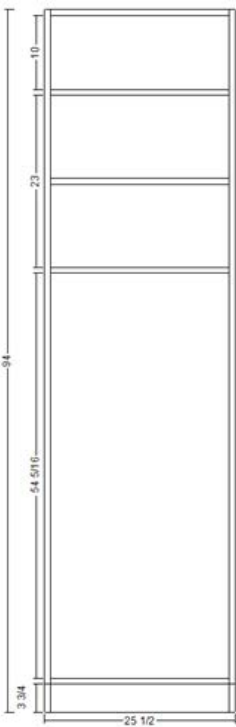
MODIFICATIONS

D&F	FE	RD	ID	RH	RW	MI1	MI2	MI3	RDTK	RCTK	PFG
					X						

DIMENSIONS



SKU	WIDTH	HEIGHT	DEPTH	BACK PANEL
CL-FH19.59415C	19.5	94	15	Yes
CL-FH25.59415C	25.5	94	15	Yes
CL-FH31.59415C	31.5	94	15	Yes
CL-FH37.59415C	37.5	94	15	Yes
CL-FH19.59424C	19.5	94	24	Yes
CL-FH25.59424C	25.5	94	24	Yes
CL-FH31.59424C	31.5	94	24	Yes
CL-FH37.59424C	37.5	94	24	Yes



Notes: The shelves are adjustable.
Reduced width modification is free of charge.

MODIFICATIONS

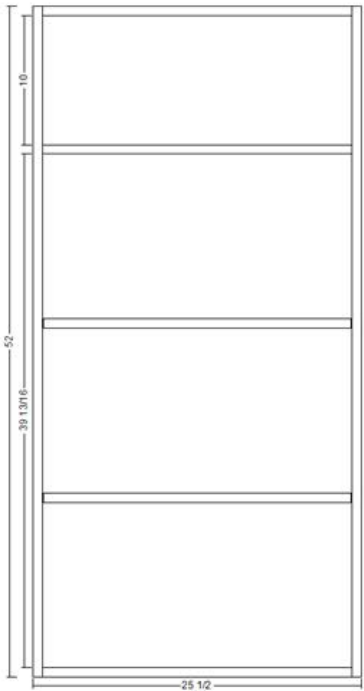
D&F	FE	RD	ID	RH	RW	MI1	MI2	MI3	RDTK	RCTK	PFG
					X						

CLOSET 52" HIGH - TALL WALL

DIMENSIONS



SKU	WIDTH	HEIGHT	DEPTH	BACK PANEL
CL-TW19.55215C	19.5	52	15	Yes
CL-TW25.55215C	25.5	52	15	Yes
CL-TW31.55215C	31.5	52	15	Yes
CL-TW19.55224C	19.5	52	24	Yes
CL-TW25.55224C	25.5	52	24	Yes
CL-TW31.55224C	31.5	52	24	Yes



19.5, 25.5, 31.5

Notes: Reduced width modification is free of charge.

MODIFICATIONS

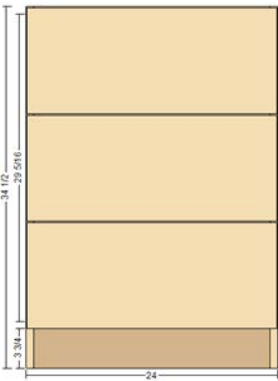
D&F	FE	RD	ID	RH	RW	MI1	MI2	MI3	RDTK	RCTK	PFG
					X						

CLOSET - DRAWER ISLAND

DIMENSIONS



SKU	WIDTH	HEIGHT	DEPTH	BACK PANEL
CL-DI3DB19.5C	19.5	34.5	24	Yes
CL-DI3DB25.5C	25.5	34.5	24	Yes
CL-DI3DB31.5C	31.5	34.5	24	Yes



ACCESSORIES

FILLER - 6" WIDE



DIMENSIONS

SKU	WIDTH	HEIGHT	DEPTH
F696	6	96	0.75

Notes:

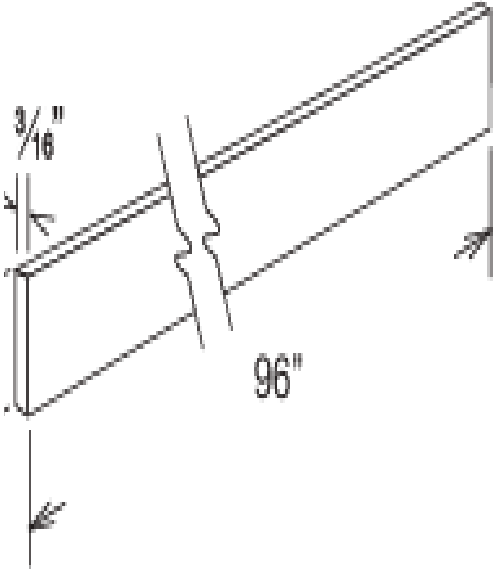
MODIFICATIONS

D&F	FE	RD	ID	RH	RW	MI1	MI2	MI3	RDTK	RCTK	PFG

TOE KICK

DIMENSIONS

SKU	WIDTH	HEIGHT	DEPTH
TK96	3.75	96	0.75



Notes:

MODIFICATIONS

D&F	FE	RD	ID	RH	RW	MI1	MI2	MI3	RDTK	RCTK	PFG

PANELS

DIMENSIONS

SKU	WIDTH	HEIGHT	DEPTH
CL-PNL1584	15	84	0.75
CL-PNL1594	15	94	0.75
CL-PNL2484	24	84	0.75
CL-PNL2494	24	94	0.75
CL-PNL2584	25	84	0.75
CL-PNL2594	25	94	0.75
CL-PNL2535	25.5	34.5	0.75
CL-PNL3035	31.5	34.5	0.75
CL-PNL4835	48	34.5	0.75



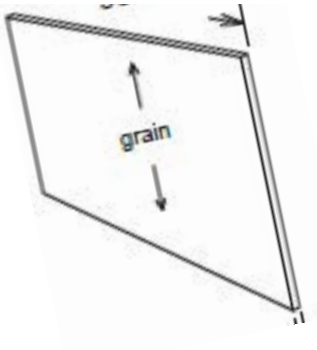
Notes: Reduced width modification is free of charge.

MODIFICATIONS

D&F	FE	RD	ID	RH	RW	MI1	MI2	MI3	RDTK	RCTK	PFG
					X						

COUNTERTOP PANELS

DIMENSIONS



SKU	WIDTH	HEIGHT	DEPTH
CL-CT19.5x25.5	19.5	0.75	25.5
CL-CT25.5x25.5	25.5	0.75	25.5
CL-CT31.5x25.5	31.5	0.75	25.5
CL-CT19.5x16.5	19.5	0.75	16.5
CL-CT25.5x16.5	25.5	0.75	16.5
CL-CT31.5x16.5	31.5	0.75	16.5

Notes Reduced width modification is free of charge.:

MODIFICATIONS

D&F	FE	RD	ID	RH	RW	MI1	MI2	MI3	RDTK	RCTK	PFG
					X						

FIL-STIK CRAYON

DIMENSIONS



	WIDTH	HEIGHT	DEPTH
Fil-Stik Crayon	N/A	N/A	N/A

Notes:

MODIFICATIONS

D&F	FE	RD	ID	RH	RW	MI1	MI2	MI3	RDTK	RCTK	PFG

HANGING ROD

DIMENSIONS



SKU	WIDTH
CL-HR18	18
CL-HR24	24
CL-HR30	30
CL-HR36	36

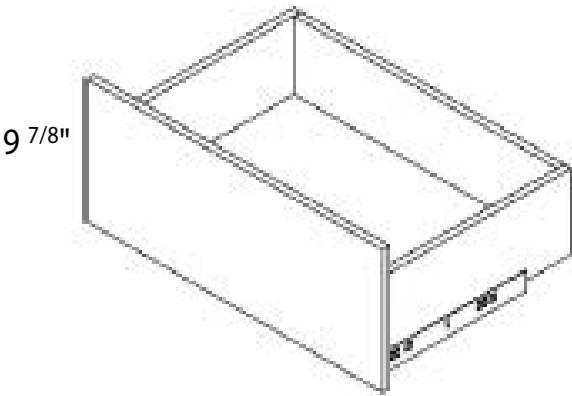
Notes:

MODIFICATIONS

D&F	FE	RD	ID	RH	RW	MI1	MI2	MI3	RDTK	RCTK	PFG

DRAWER BOX

DIMENSIONS



SKU	WIDTH	DEPTH
CL-DB1815	18	15
CL-DB2415	24	15
CL-DB3015	30	15
CL-DB3615	36	15
CL-DB1824	18	24
CL-DB2424	24	24
CL-DB3024	30	24
CL-DB3624	36	24

Notes:

MODIFICATIONS

D&F	FE	RD	ID	RH	RW	MI1	MI2	MI3	RDTK	RCTK	PFG

SHELVES

DIMENSIONS



SKU	WIDTH	HEIGHT	DEPTH
CL-SH1814	18	0.75	14
CL-SH2414	24	0.75	14
CL-SH3014	30	0.75	14
CL-SH3614	36	0.75	14
CL-SH1823	18	0.75	23
CL-SH2423	24	0.75	23
CL-SH3023	30	0.75	23
CL-SH3623	36	0.75	23

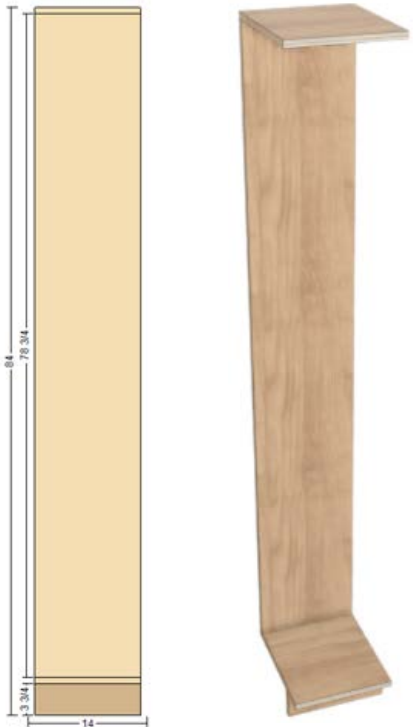
Notes:

MODIFICATIONS

D&F	FE	RD	ID	RH	RW	MI1	MI2	MI3	RDTK	RCTK	PFG

DRAWER BOX

DIMENSIONS



Front

SKU	WIDTH	HEIGHT	DEPTH
CL-BR148415	14	84	15
CL-BR149415	14	94	15
CL-BR148424	14	84	24
CL-BR149424	14	94	24

Notes:

MODIFICATIONS

D&F	FE	RD	ID	RH	RW	MI1	MI2	MI3	RDTK	RCTK	PFG



Closet Catalog

Fusion Cabinet Company
6800 W Van Buren St.
Phoenix, AZ 85043
Tel 602-730-9225
sales@fusioncabinetcompany.com
www.FusionCabinetCompany.com

APRIL 2026